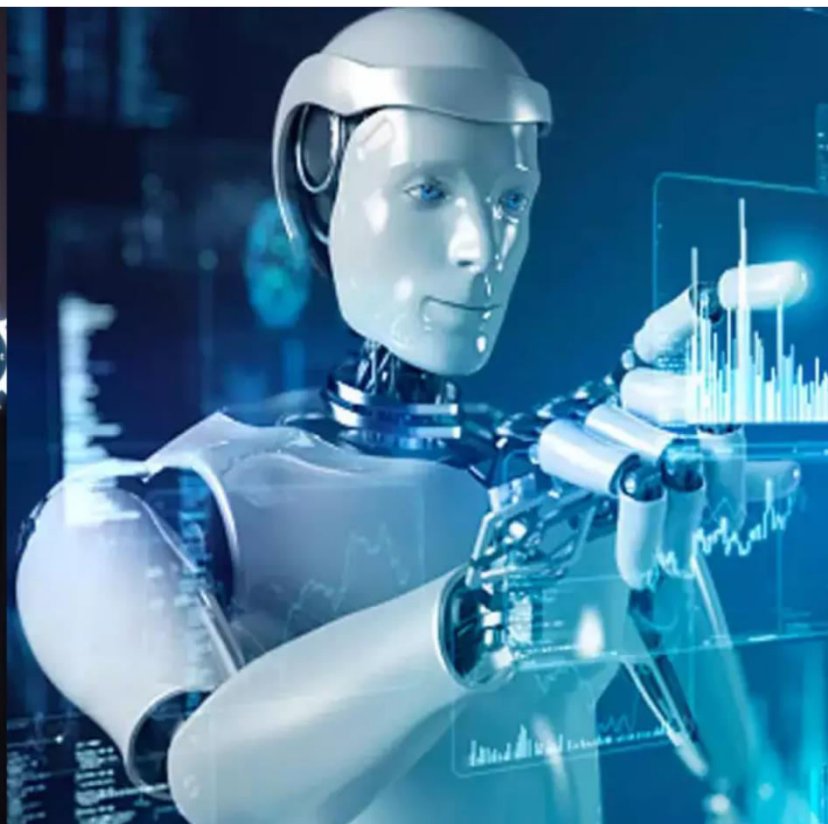




International Journal of Innovative Research in Science Engineering and Technology (IJIRSET)

(A Monthly, Peer Reviewed, Refereed, Scholarly Indexed, Open Access Journal)



Impact Factor: 8.699

Volume 15, Issue 3, March 2026

Adaptive Traffic Signal Management System using Computer Vision

Prof. Ankita S. Nagargoje¹, Adwait Babar², Anurag Birari³, Pavan Gorde⁴, Aarya Ghadage⁵

Professor, Department of Computer Engineering, AISSM Polytechnic, Pune, Maharashtra, India¹

Students, Department of Computer Engineering, AISSMS Polytechnic, Pune, Maharashtra, India²³⁴⁵

ABSTRACT: Traffic congestion has become a major concern in urban environments due to the rapid increase in the number of vehicles and limited road infrastructure. Traditional traffic signal systems operate on fixed timing mechanisms, which do not consider real-time traffic conditions. This often leads to inefficient traffic flow, increased waiting time, excessive fuel consumption, and environmental pollution.

This paper presents the design and implementation of an **Adaptive Traffic Signal Management System using computer vision and deep learning techniques**. The system utilizes traffic video input to detect and classify vehicles using the YOLO (You Only Look Once) object detection algorithm, while OpenCV is used for frame processing and visualization.

To improve the reliability of the system, a multi-frame analysis approach is adopted, where multiple frames from the video are analyzed to compute an average vehicle count. This reduces fluctuations in detection and provides a more stable estimation of traffic density. Based on this density, the system dynamically allocates green signal time to optimize traffic flow.

The proposed system offers a cost-effective, scalable, and intelligent solution for modern traffic management and can be integrated into smart city infrastructure.

KEYWORDS: Traffic Management, Computer Vision, YOLO, OpenCV, Vehicle Detection, Adaptive Signal Control, Smart Cities

I. INTRODUCTION

Traffic congestion is one of the most pressing challenges faced by modern cities. With increasing population and urbanization, the number of vehicles on the road has grown significantly, resulting in overcrowded intersections and inefficient traffic flow. Conventional traffic signal systems operate on fixed timing schedules, where each lane is assigned a predetermined signal duration irrespective of actual traffic conditions.

This rigid approach leads to several inefficiencies. For example, during peak hours, some lanes may experience heavy congestion while others remain relatively empty. Despite this imbalance, all lanes receive equal signal time, causing unnecessary delays and frustration among commuters. Additionally, vehicles waiting at signals contribute to increased fuel consumption and air pollution.

Recent advancements in artificial intelligence and computer vision have opened new possibilities for intelligent traffic management. By using cameras and real-time image processing, it is possible to monitor traffic conditions and make data-driven decisions.

In this project, an adaptive traffic signal system is developed using YOLO for vehicle detection and OpenCV for video processing. The system analyzes traffic density in real time and dynamically adjusts signal timing, thereby improving efficiency and reducing congestion.

Volume 15, Issue 3, March 2026**|DOI: 10.15680/IJRSET.2026.1503340|**

II. PROBLEM STATEMENT

Existing traffic management systems suffer from several limitations due to their reliance on fixed timing mechanisms. These systems do not adapt to real-time traffic conditions, leading to inefficient utilization of road infrastructure.

Some of the major problems include increased waiting time at intersections, traffic congestion during peak hours, unnecessary delays on empty roads, and higher fuel consumption due to prolonged idling. Manual traffic control is not a viable solution, as it requires continuous human involvement and lacks consistency.

Therefore, there is a need for an intelligent and automated system that can monitor traffic conditions in real time, accurately detect vehicles, and dynamically adjust signal timings to optimize traffic flow.

III. LITERATURE SURVEY

Several research works have explored the use of computer vision and machine learning in traffic management systems. The introduction of YOLO by Joseph Redmon et al. revolutionized object detection by providing high-speed and accurate detection in real-time scenarios.

Various studies have proposed camera-based traffic monitoring systems that analyze traffic density and adjust signal timings accordingly. Deep learning models have been widely used for vehicle detection due to their ability to handle complex environments and varying lighting conditions.

Convolutional Neural Networks (CNNs) have also been used extensively for object detection tasks, providing high accuracy in identifying vehicles. Image processing-based traffic control systems have demonstrated improvements in traffic efficiency by dynamically adjusting signal durations.

These studies highlight the effectiveness of AI-based approaches in developing intelligent traffic management systems capable of handling real-world challenges.

IV. METHODOLOGY

The proposed system follows a systematic approach to analyze traffic conditions and control signal timing dynamically. The process begins with video input, which serves as the primary source of traffic data. The video can be obtained from a live camera feed or a pre-recorded file.

Using OpenCV, the video is processed frame by frame. Each frame is treated as an individual image representing the traffic scenario at a specific moment. These frames are then passed to the YOLO object detection model, which identifies vehicles such as cars, buses, trucks, and motorcycles.

The model generates bounding boxes around detected vehicles and assigns confidence scores indicating the probability of correct detection. These detections are used to count the number of vehicles present in each frame.

To improve accuracy and reduce noise, the system implements a multi-frame analysis approach. Instead of relying on a single frame, multiple frames are selected at regular intervals. Vehicle detection is performed on each frame, and the results are aggregated to compute an average vehicle count.

This average value provides a more stable and reliable estimate of traffic density. Based on this density, the system categorizes traffic into different levels such as low, moderate, and high.

Finally, the system dynamically calculates the green signal duration using predefined logic. The output is displayed with bounding boxes, vehicle count, and signal timing, providing a clear visualization of the results.

V. KEY FEATURES

The system offers several advanced features that make it suitable for modern traffic management applications. One of the primary features is real-time vehicle detection using the YOLO algorithm, which ensures fast and accurate identification of multiple vehicles.

The system also performs automatic vehicle counting, eliminating the need for manual monitoring. Dynamic signal timing is another key feature, allowing the system to adjust signal durations based on actual traffic conditions.

Multi-frame analysis enhances stability by reducing fluctuations in detection results. The system also provides visual output with bounding boxes and labels, making it easy to interpret results.

Additionally, the system is cost-effective and scalable, as it utilizes existing camera infrastructure and can be expanded for smart city applications.

VI. SYSTEM IMPLEMENTATION

The system is implemented using Python programming language with OpenCV and YOLOv4-Tiny model. The implementation begins by loading the pre-trained YOLO model along with configuration and class label files.

The video input is processed using OpenCV's VideoCapture function, and frames are extracted sequentially. Each frame is converted into a blob and passed through the neural network for detection.

Detected vehicles are filtered based on confidence thresholds, and non-maximum suppression is applied to remove duplicate detections. The final bounding boxes are drawn on the frame.

Multiple frames are analyzed, and the average vehicle count is calculated. Based on this value, the green signal time is determined.

Adaptive Traffic Signal Management System using Computer Vision

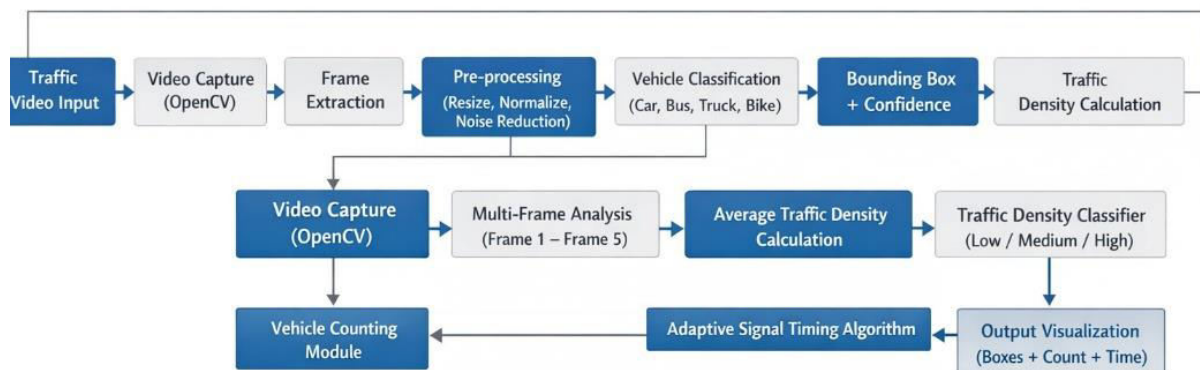


Fig 1: Vehicle Detection Output

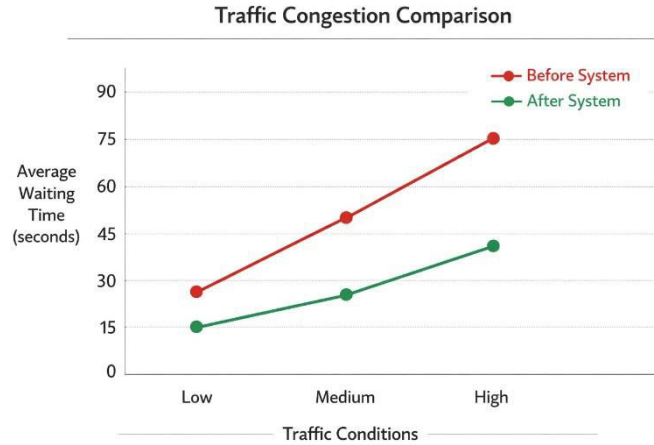


Fig 2: Multi-frame Analysis

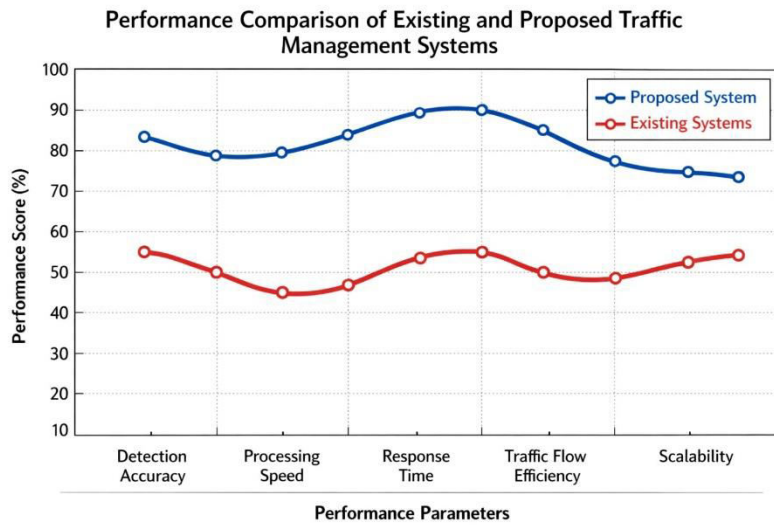


Fig 3: Final Output with Signal Time

VII. RESULT ANALYSIS

The proposed system demonstrates significant improvement over traditional fixed-timing traffic systems. The use of YOLO enables accurate and real-time vehicle detection, while multi-frame analysis ensures stable and consistent results.

Experimental observations show that the system effectively adapts to varying traffic conditions by dynamically adjusting signal timing. This reduces unnecessary waiting time and improves overall traffic flow.

However, detection accuracy may decrease in low-light conditions or when vehicles are partially occluded. Despite these challenges, the system provides a reliable and efficient solution for traffic management.

VIII. CHALLENGES

Despite the effectiveness of the proposed adaptive traffic signal management system, several challenges must be addressed for real-world deployment. One of the primary challenges is the variation in environmental conditions such as lighting, weather, and camera quality. In low-light conditions, such as nighttime or poorly lit roads, the accuracy of vehicle detection may decrease significantly. Similarly, adverse weather conditions like rain, fog, or dust can obscure visibility and affect the performance of the object detection model.

Another major challenge is the detection of small or partially occluded objects. Vehicles such as motorcycles and bicycles are often difficult to detect, especially in dense traffic scenarios where they may be partially hidden behind larger vehicles like buses or trucks. This can lead to inaccuracies in vehicle counting and affect traffic density estimation.

Real-time processing is also a critical concern. The system requires sufficient computational power to process video frames and perform deep learning-based detection efficiently. On low-end hardware or embedded systems, maintaining real-time performance can be challenging without proper optimization.

Additionally, the scalability of the system poses a challenge. Deploying the system across multiple intersections requires seamless integration with existing traffic infrastructure, including traffic lights and monitoring systems. Data privacy and security are also important considerations when using camera-based systems, as they involve continuous video surveillance.

Addressing these challenges is essential for improving the robustness, reliability, and scalability of the proposed system.

IX. CONCLUSION

The proposed Adaptive Traffic Signal Management System successfully demonstrates the application of computer vision and deep learning techniques in improving traffic control mechanisms. By utilizing the YOLO object detection model and OpenCV for video processing, the system is capable of detecting and counting vehicles in real time with considerable accuracy.

Unlike traditional traffic systems that rely on fixed timing mechanisms, the proposed system dynamically adjusts signal timing based on actual traffic density. This results in more efficient utilization of road infrastructure, reduced waiting time at intersections, and improved overall traffic flow.

The implementation of multi-frame analysis further enhances the reliability of the system by reducing fluctuations in vehicle detection and providing a more stable estimation of traffic conditions. This makes the system more practical and suitable for real-world applications.

Overall, the system provides a cost-effective, scalable, and intelligent solution for modern traffic management. It has the potential to significantly reduce traffic congestion and contribute to the development of smart city infrastructure.

X. FUTURE SCOPE

The proposed system can be further enhanced by incorporating several advanced features and technologies to improve its performance and applicability. One of the major improvements includes integrating the system with IoT-based smart traffic signals, enabling real-time communication between traffic nodes and centralized control systems.

Deployment on embedded platforms such as Raspberry Pi or edge devices can make the system more practical for real-world implementation. Optimization techniques can be applied to ensure efficient performance on low-power hardware.

The use of advanced object detection models such as YOLOv8 or newer architectures can significantly improve detection accuracy, especially for small and partially occluded objects. Additionally, implementing lane-wise vehicle detection can provide more granular control over traffic signals.

Another important enhancement is the inclusion of emergency vehicle detection. By identifying ambulances, fire trucks, or police vehicles, the system can prioritize their movement by automatically allocating green signals, thereby improving emergency response times.

Future work may also include multi-intersection coordination, where multiple traffic signals communicate with each other to optimize traffic flow across an entire network. Cloud-based monitoring and data analytics can further enhance the system by providing insights into traffic patterns and enabling predictive traffic management.

REFERENCES

- [1] Joseph Redmon et al., “YOLO: You Only Look Once – Unified, Real-Time Object Detection,” IEEE Conference on Computer Vision and Pattern Recognition (CVPR).
- [2] “Smart Traffic Monitoring System using Computer Vision,” International Journal of Engineering Research.
- [3] “Intelligent Traffic Management System using Deep Learning,” IEEE Transactions on Intelligent Transportation Systems.
- [4] “Vehicle Detection using Convolutional Neural Networks,” International Journal of Computer Applications.
- [5] “Adaptive Traffic Signal Control using Image Processing,” International Journal of Advanced Research in Computer Engineering.
- [6] OpenCV Documentation, Open Source Computer Vision Library.



INTERNATIONAL
STANDARD
SERIAL
NUMBER
INDIA



INTERNATIONAL JOURNAL OF INNOVATIVE RESEARCH

IN SCIENCE | ENGINEERING | TECHNOLOGY

 9940 572 462  6381 907 438  ijirset@gmail.com



www.ijirset.com

Scan to save the contact details